

SMART
POWER DESIGN



SMART
POWER
DESIGN

FRONT SPOILER WITH DRL SMART FORTWO 451

User Manual | Smart Power Design

Front Spoiler with DRL Smart Fortwo 451



Photo 1: Front view of Smart Fortwo 451 with Smart Power Design's Front Spoiler (with Daytime Running Lights).

All work should be performed with the utmost care to avoid any damage.

Please check that the parts listed are complete before starting the installation.

For the painting of the Front Spoiler no specific instructions have to be followed.

Parts List

1 x Front Spoiler
2 x Metal Brackets
8 x Screws
1 x Stretch Grill
1 x Nylon Cable
—

&

4 x Rosettes
1 x Cable
1 x Fuse
1 x Terminal

Instructions

1. Remove the original (or stock) Front Spoiler
 - a. Unfasten the Front Spoiler with the screws at positions 1 and 2 (see Photo 2)
 - b. Unclip the fastening buttons 1 to 6 on the Front Spoiler (see Photo 3)
 - c. Pull the Front Spoiler off the Smart Car
 - d. Remove the plastic cover of the fog LAMP (it there is one)

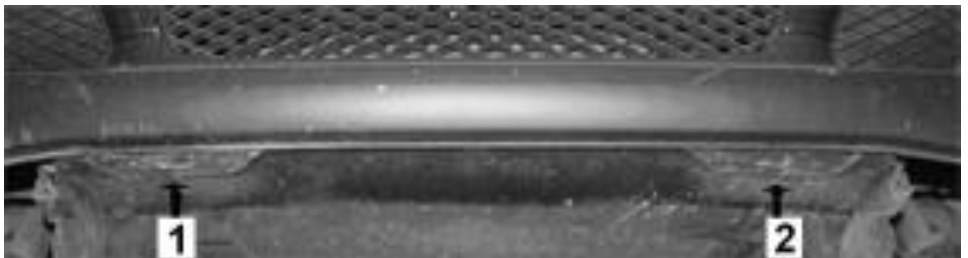


Photo 2: Screws 1 and 2

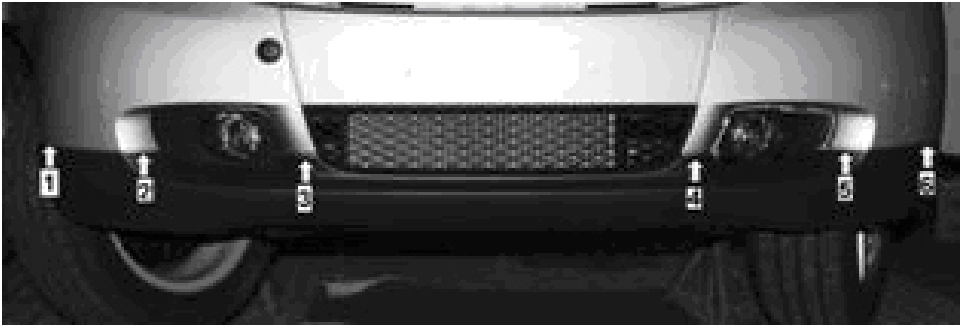


Photo 3: Fastening Buttons 1 to 6

2. Remove a fitting portion of the underbody protection by cutting it out (see Photo 4)

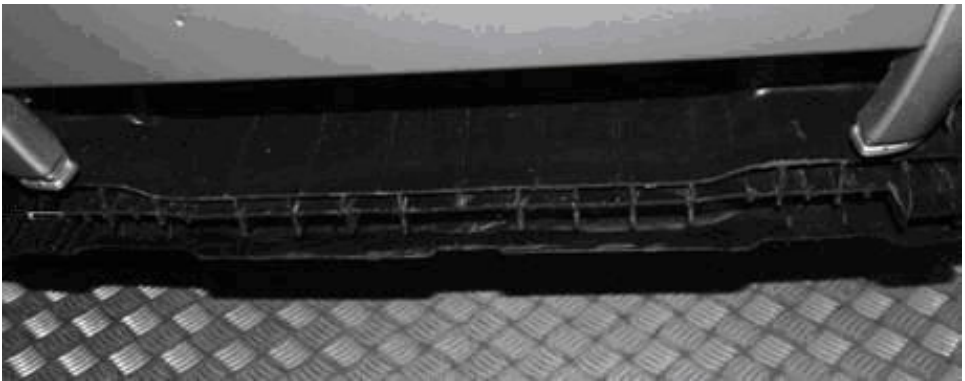


Photo 4: Cut it so it would look like this

3. Fasten the stretch grill on the underbody protection with two screws (see Photo 5)

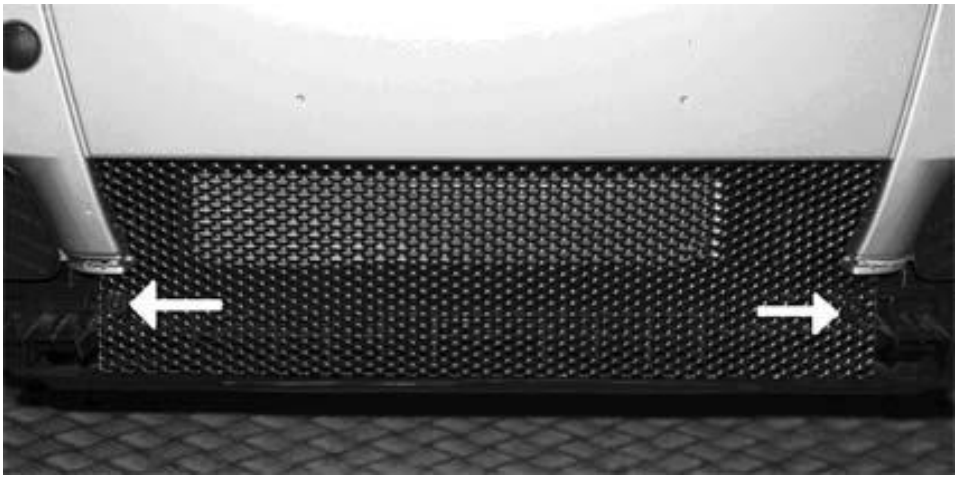


Photo 5: Fastening the stretch grill

4. Mount the new Front Spoiler:
 - a. Place the new Fr



ont

4. Mount the new Front Spoiler:
 - a. Place the new Front Spoiler.
 - b. Clip the fastening buttons 1 to 6 on the Front Spoiler (like the opposite of Photo 3).
 - c. Screw the Front Spoiler tight at positions 1 and 2 (see Photo 2).
 - d. Please go to page 6 to view the



Photo 6: Stabilizing the Front Spoiler with the metal brackets

Daytime Running Lights Smart Fortwo 451



Photo 7: The Daytime Running Lights and the parts you will receive by Smart Power Design

Instructions for the Daytime Running Lights

1. First of all, the engine must be turned off.
2. Remove the existing caps from the Front Bumper.
3. Open a hole to the rubber seal (see Photo 2), as small as to pass through the wires to the interior of the Smart Fortwo.
4. Unscrew the insurance box (SAM) and connect the red terminal with the gray/green cable (see Photo 9).
5. Then, connect the yellow cable with the pink connector on the red terminal and screw the insurance box (SAM) again.
6. Connect the white wire to the supplied fuse box and place it to the positions 1 to 4 (see Photo 10) and put the fuse to the fuse box.
7. Screw the black wire to a screw which is at the driver's floor at the left side, almost under the fuse box.
8. Finally, close the plug of the Daytime Running Lights and put them correctly on the spot, keeping in mind to hook it right.
9. You finished installing the Daytime Running Lights (DRL). Please go to page 4 to complete the installation.



Photo 8: Positions of the screws, there are four on each Fender Flare



Photo 9: Positions two of the four screws

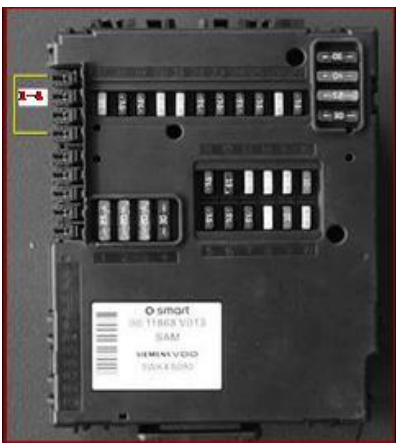


Photo 10: Fender Flare (Rear Left)



Photo 11:
Daytime Running
Lights for Smart
Fortwo 451

Enjoy what you have just installed. We hope that you are not going to like it but to love it as it fits perfectly on your lovely Smart Fortwo 451.



We would like to thank you for purchasing from Smart Power Design a company specialized in Smart Tuning and Accessories.

If you have any problem or questions feel free to contact us via email at: info@smart-power-design.de or sales@smart-power-design.com or via telephone at: 0049-711-217-20291.



Company Information

Smart Power Design
Möhringer Str. 93 – Stuttgart
Zip: 70199 – Germany

Email: info@smart-power-design.de
sales@smart-power-design.de

Telephone: 0049 711 217 20291

Website: www.smart-power-design.de

Follow us

